

ELEV Box6

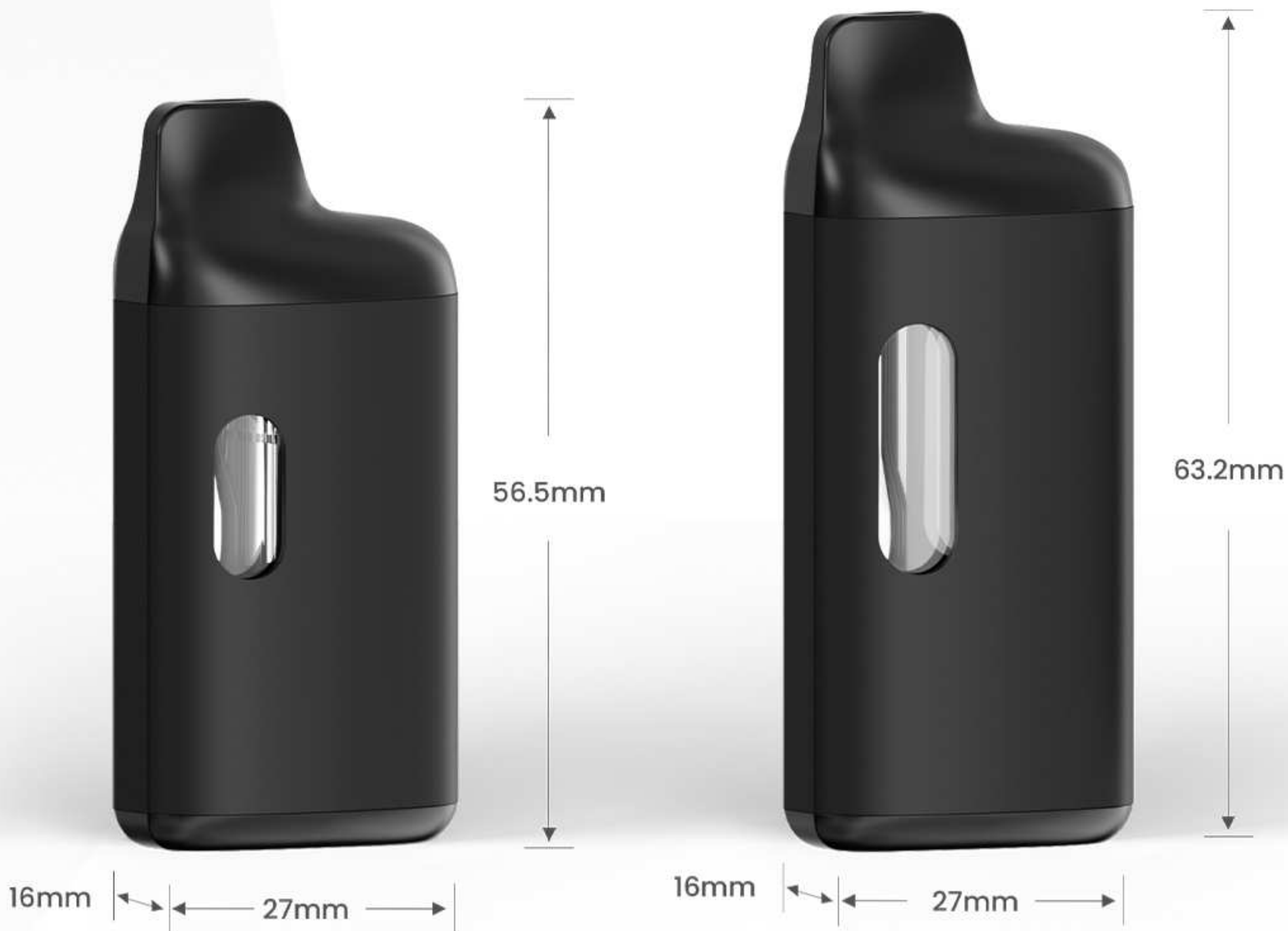
User Manual

1.0mL/2.0mL Disposable

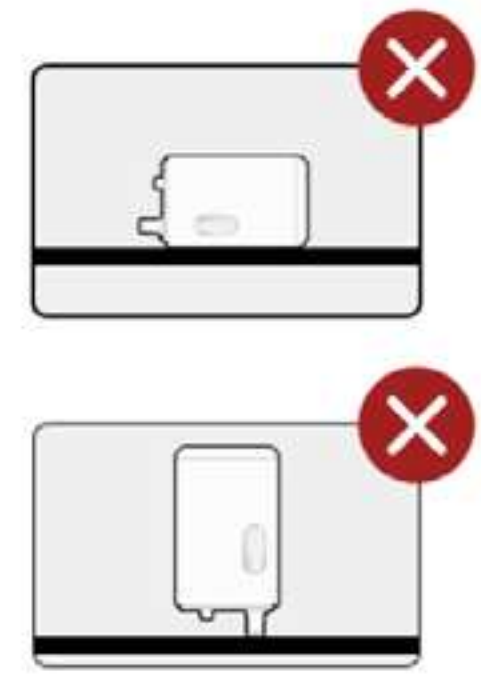


Specifications

Dimension(mm)	56.5H*27.0W*16.0D (1mL) 63.2H*27.0W*16.0D (2mL)
Tank Material	Food Grade PCTG
Central Post	Medical Grade SUS316L Stainless Steel
Battery Housing	Aluminum Alloy
Output Power	7.7W
Resistance	1.5Ω
Battery Capacity	280mAh
Charging	USB Type-C
Activation	Inhale Activated
Tip Type	Snap In

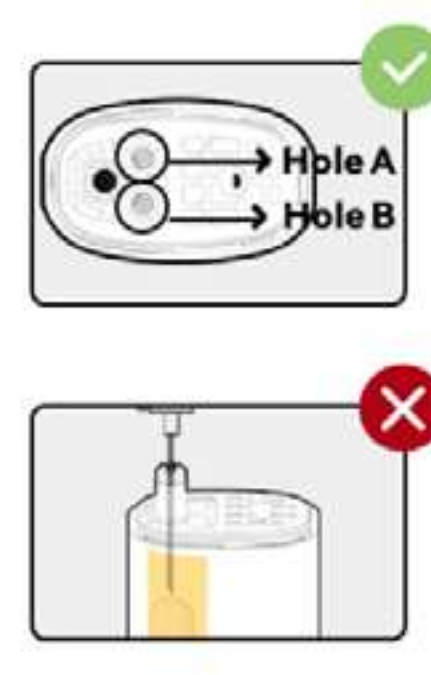


Filling Instruction



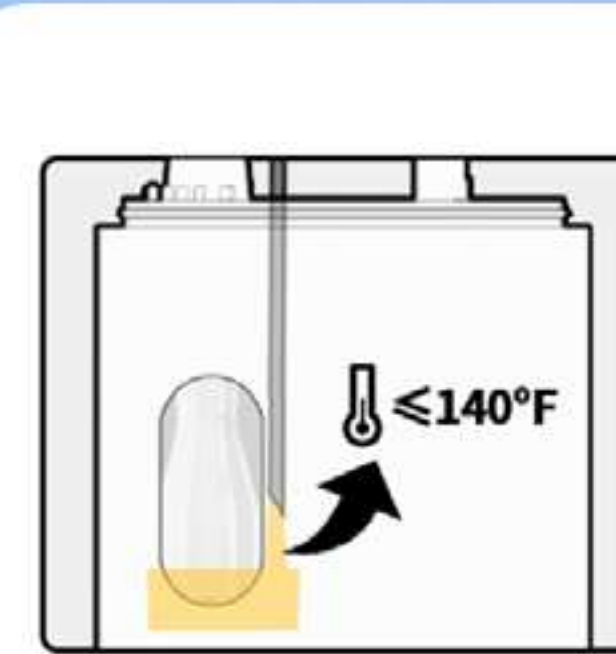
1

- Unpackge the cartridge and make sure it is vertically upright with the tray.



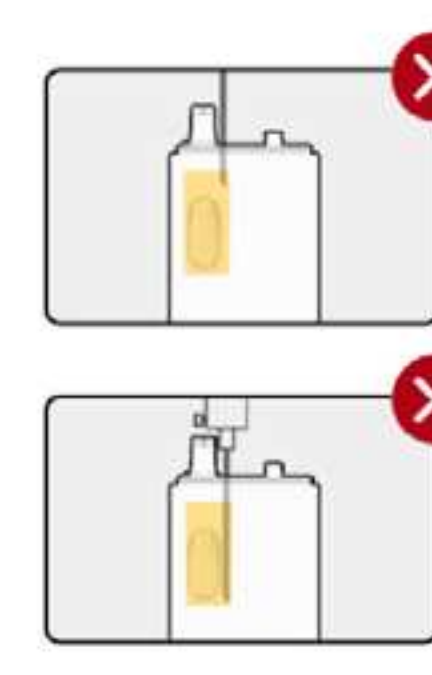
2

- Do not unplug the silicone cap when filling the oil.
- Insert the needle vertically into filling hole A or B, and do not insert it into the central post.
- Make sure the needle diameter is $\leq 1.8\text{mm}$.



3

- The output temperature must be under 140°F.



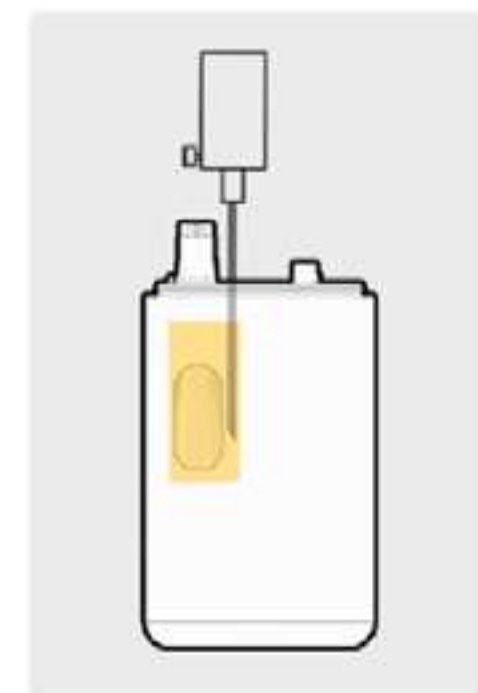
4

- The length of the needle is 2/3 of the height of the oil tank.
- Avoid the needle touching the bottom of the oil tank.
- Fill in 0.95-1.0mL for a 1ml device.
- Fill in 1.95-2.0mL for a 2ml device.



5

- When snapping in the mouthpiece, it should be vertical to the device and forced evenly.



6

- Complete the snapping process within 90s after filling the oil.



7

- Ensure the silicone cap is on the mouthpiece after completing the filling process.
- Wait 4 hours before use.





8

- Store the device in a dry, cool place that avoids sunlight.
- After unpacking the product, finish it within 2 weeks for the best taste.

For bulk filling and capping, it is recommended to use specialized tools and jigs to ensure precision. Contact us if needed.

Operating Instructions & Other Functions



Category	Function	Instruction	LED Indicator	Remarks
Operation	Start	 Inhale	Lights Up	The light gradually turns down when stop vaping.
	Charging	 Plug in	On: Charging Off: Fully Charged 3 Blinks: Unplugging	
Other Functions	Overdose Protection (A puff \geq 10s)		2 Blinks	Device stops output after the light blinks.
	Low Voltage Protection		10 Blinks	Device stops output after the light blinks.
	Short-Circuit Protection		Stays on for 2s	A breakdown occurs. Device stops output.



<https://ciliconplus.shop>

✉ info@ciliconplus.com

📷 [@cilicon.official](https://www.instagram.com/cilicon.official)

✂ [@CiliconOfficial](https://twitter.com/CiliconOfficial)

📘 [@ciliconofficial](https://www.facebook.com/ciliconofficial)

in [@cilicon](https://www.linkedin.com/company/cilicon)
